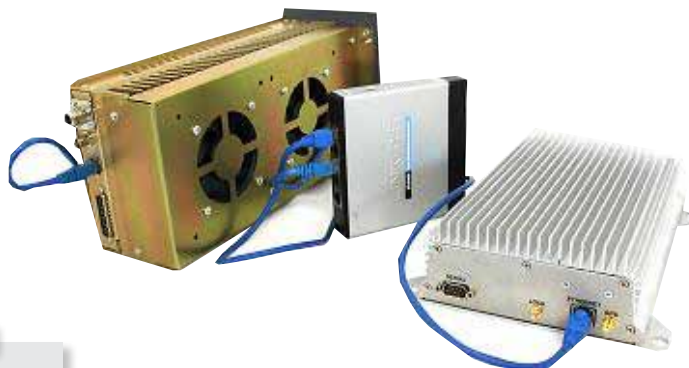


Smart IP Power Amplifiers

FM and Linear mode Digitally Controlled Power Amplifier

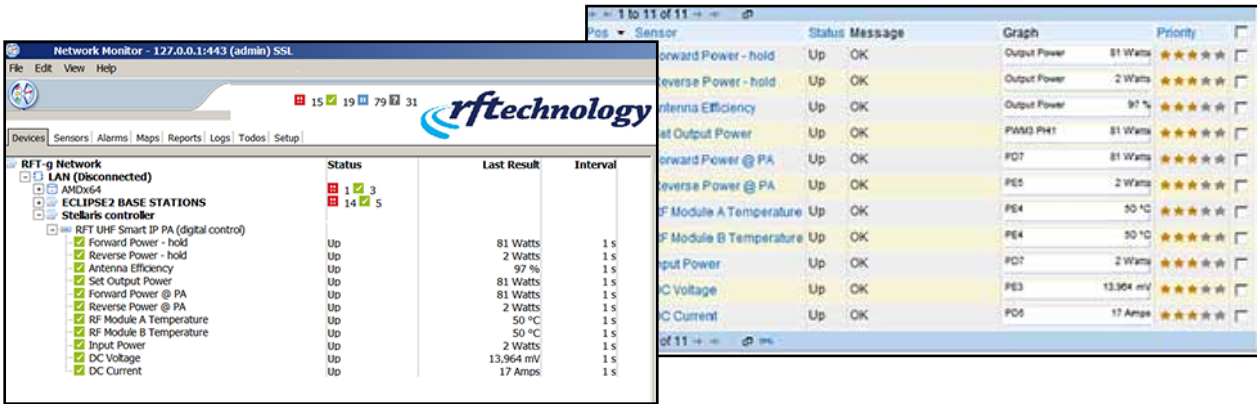


- Integrated Digital RFT controller supporting full control and monitoring the 16 sensors and alarms over LAN (SNMP v2c) -
- RF input sensors monitoring input – no key up with out RF Input.
- Remote IP control using Ethernet (set or adjust your power remotely)
- Quick key up response
- Closed loop control ensuring set output constant (multi environment compensating i.e. component variance, power, temperature, component ageing etc
- High RF shielding and isolation
- Monitors antennae reflection and performance remotely over extended periods
- 5 temperature sensors to monitor heat generation internally
- Automatic shut down on triggered events (adjustable)
- 50 Ohm output
- Adjustable over entire frequency band without tuning (no sub bands)
- 60 Watts or 120 to 130 Watts Output Power at VHF and UHF
- 45 Watts or 80 Watts Output Power at 800 Mhz
- Can operate in linear mode at reduced power
- Choice of enclosure 4RU in sub rack or 2RU
- Upcoming models to 250 watts and beyond



“Leading the evolution of radio’s next generation”.

Digital Control with SNMP Get and Set functions



Typical operation and monitoring

Specifications

Voltage Input	12 Volts or 24 Volts DC or 48 volts (optional)
Max. DC current	10 Amps (70w) 19 Amps (120w)
Input / Output Power	2.0W-3.0W / 60W-120W
Duty Cycle	100%
Load Mismatch Tolerance	Full Power at 100% reflection with circulator (Optional circulator)
Spurious & Harmonics	Meets ACMA , FCC & IC
Input/Output Connector	Type `N` Female (50 Ohms)
Cooling Method	Fan Cooled
Operating Temp. Range	-30oC to +60oC
Humidity	80% at +40oC (non-condensing)
Vertical Mounting	4 RU in RFT Subrack or 2 RU
Horizontal Mounting	4 units or 2 units in 2 RU
Depth	300mm
Weight	3-5kg



RF Technology Americas Inc
 17791 Mitchell North, Suite C
 Irvine, CA 92614
 Phone/Fax 714.434.6019
 sales@rftechnologyamericas.com
 www.rftechnologyamericas.com
 All Rights Reserved ©2015